

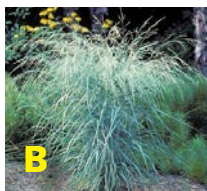
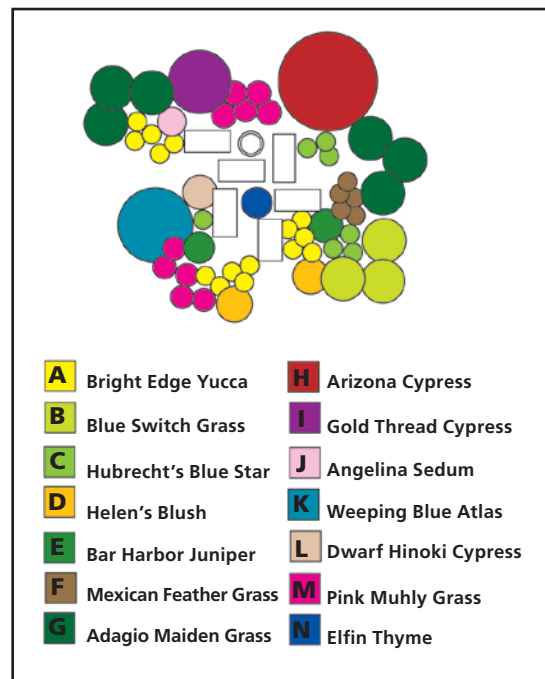
A “No-Fuss” Garden

An easy-care landscape plan

by A&A Plants



Illustration by Jim Overbey and Antoine Reid



B. Blue Switch Grass (*Panicum virgatum* 'Heavy Metal'): Stiff metallic-blue foliage. Blooms late summer with fine-textured seed heads. 4-5'



C. Hubrecht's Blue Star (*Amsonia hubrichtii*): Attractive blue flowers in spring and striking yellow fall foliage. Grows in almost all conditions. 2' x 2'



D. Helen's Blush Euphorbia (*Euphorbia* 'Helen's Blush'): Variegated green and white foliage. Fuchsia tips in cold. Chartreuse spring blooms. 2' x 2'



F. Mexican Feather Grass (*Nassella tenuissima*): Very light and wispy texture with green foliage and a creamy bloom. 1-2'



G. Adagio Maiden Grass (*Miscanthus sinensis* 'Adagio'): Compact, clump-forming grass. Silvery foliage, pink blooms change to silvery white. 4'



I. Gold Thread Cypress (*Chamaecyparis pisifera filifera aurea nana*): Golden thread-like foliage. A nice splash of year-round color. 5' x 4'



J. Angelina Sedum (*Sedum rupestre* 'Angelina'): Perennial evergreen, yellow needle-like foliage. 6"



N. Elfin Thyme (*Thymus serpyllum*): Creeping, aromatic evergreen forms dense mat, very low to grow. 1-2"